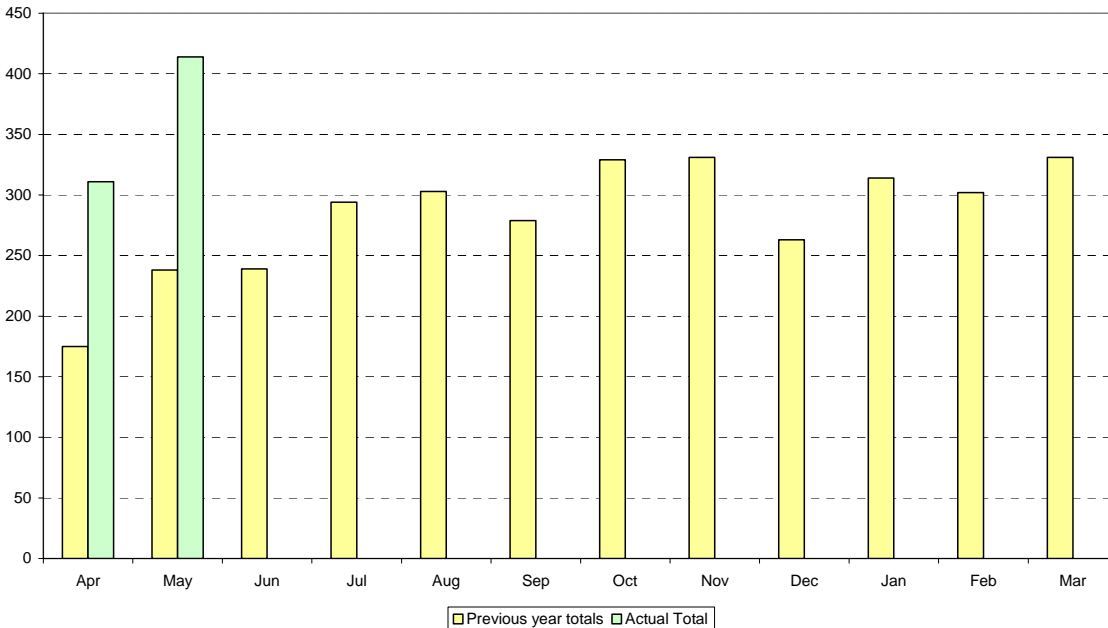


15. Actual Bodily Harm

Actual bodily harm (ABH) contributed the largest proportion of crimes to the violence against the person figure, with 43% of the total 9,338 incidents in 2004/5. It can be seen in the graph below that ABH has seen an increase in April and May of this year over the previous year, with May's figure substantially higher than any month in the previous year.

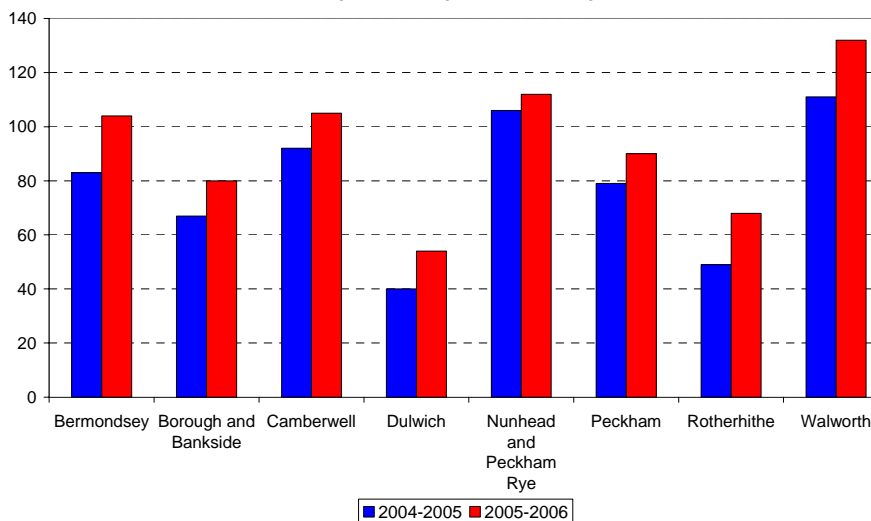
Monthly Chart : ABH



16. Community Councils

The following chart illustrates the breakdown by community council number of ABH incidents reported to the police.

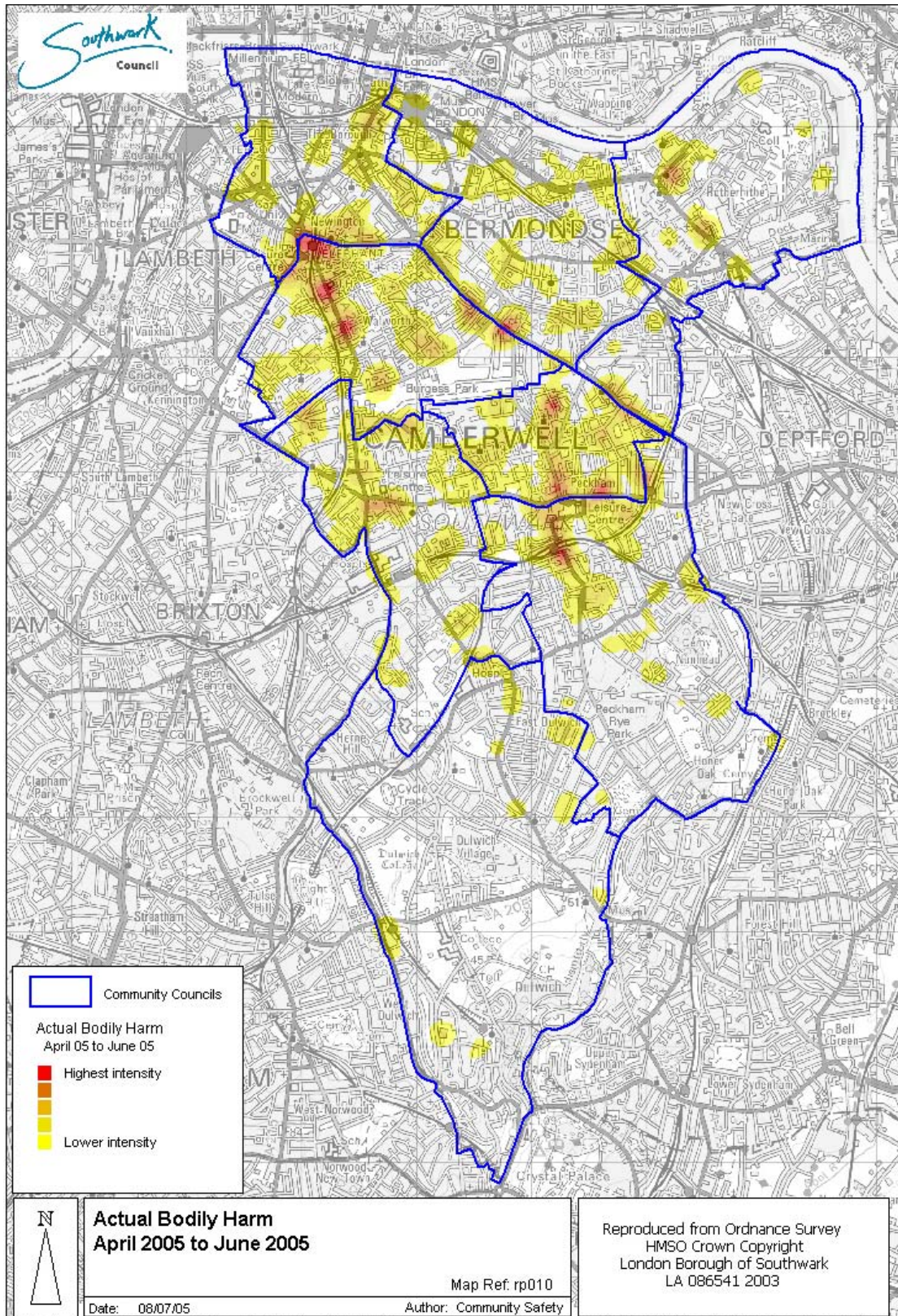
Actual Bodily Harm by Community Council



Actual bodily harm has increased in every community council. Rotherhithe and Dulwich have seen the largest percentage increases of 39% and 35% respectively, but East Walworth has the largest number of incidents with 132.

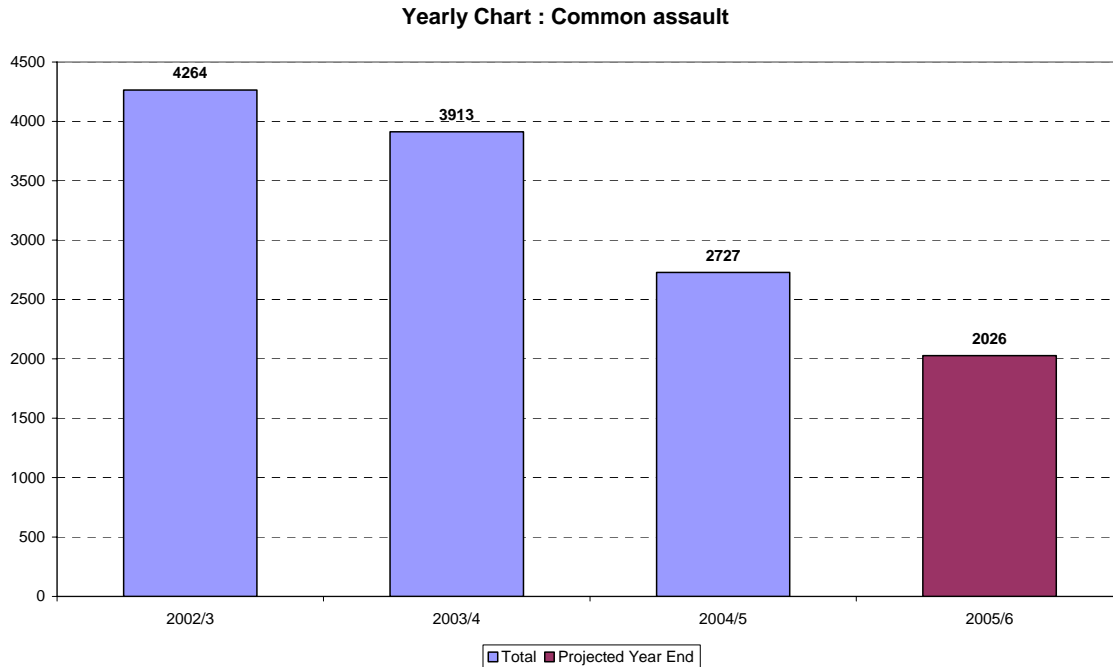
17. Actual Bodily Harm Hotspot

The following diagram illustrates the hotspot areas for ABH incidents reported to the police. There are more hotspots for ABH than other crimes, indicating a more even spread.



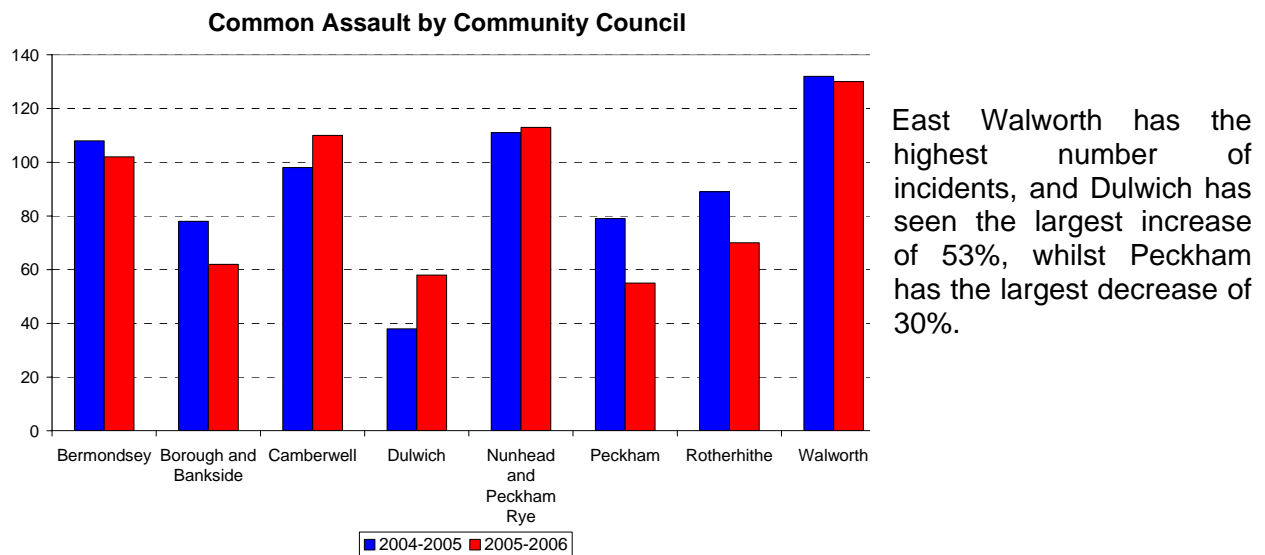
18. Common Assault

Common assault has seen a decrease of 28.9% to 384 in the first two months of this year when compared to the same period in the previous year. If this trend continues the year end performance will be as shown in the graph below, which shows a decreasing trend.¹



19. Community Councils

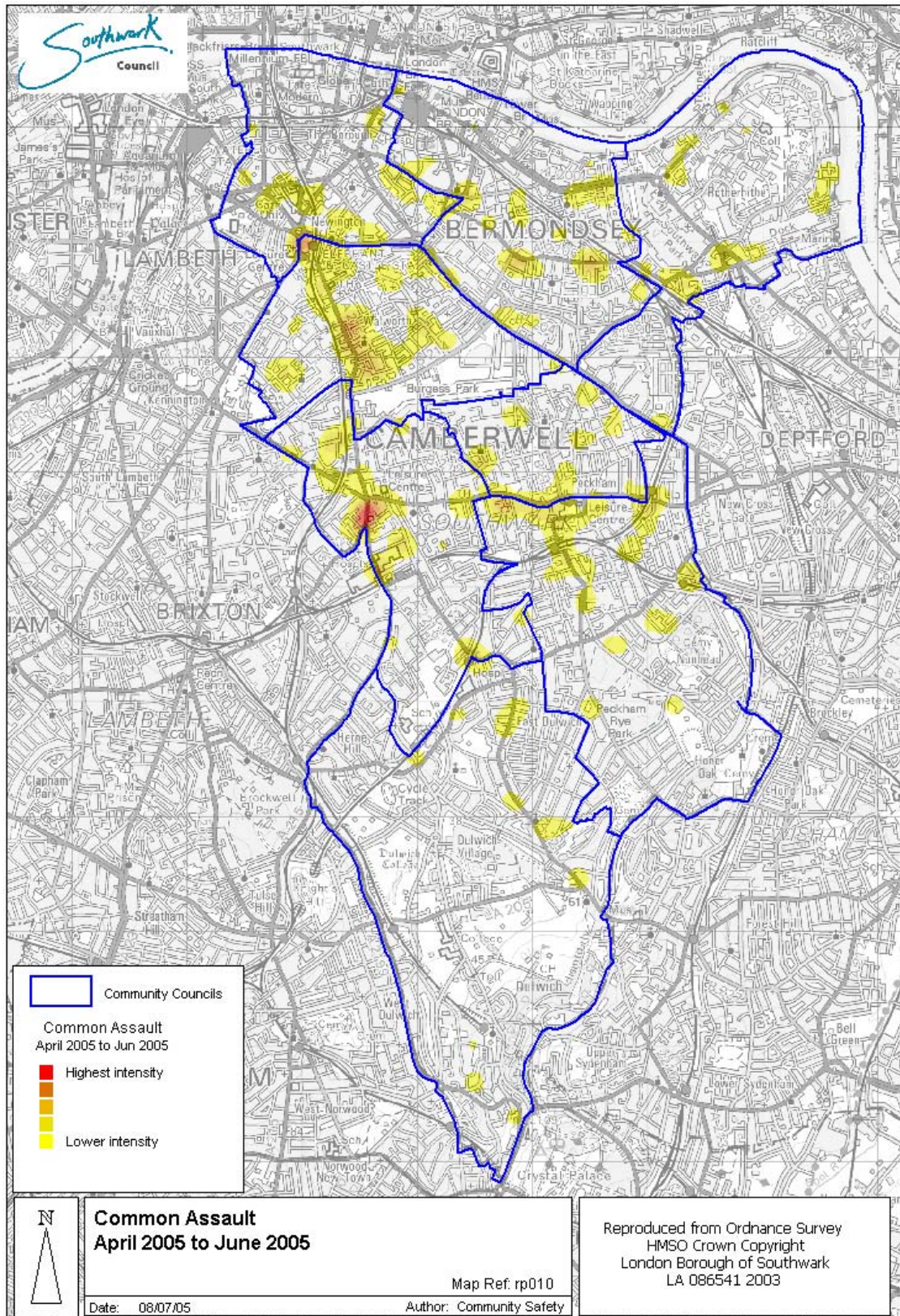
The following chart illustrates the breakdown by community council of common assault incidents reported to the police.



¹ Year end projections are based on historical trends, and as such are not guarantees to future performance. They make no prediction for planned or current initiatives.

20. Common Assault Hotspot

The following diagram illustrates the hotspot areas for common assault incidents reported to the police. The main hotspot is in Camberwell.

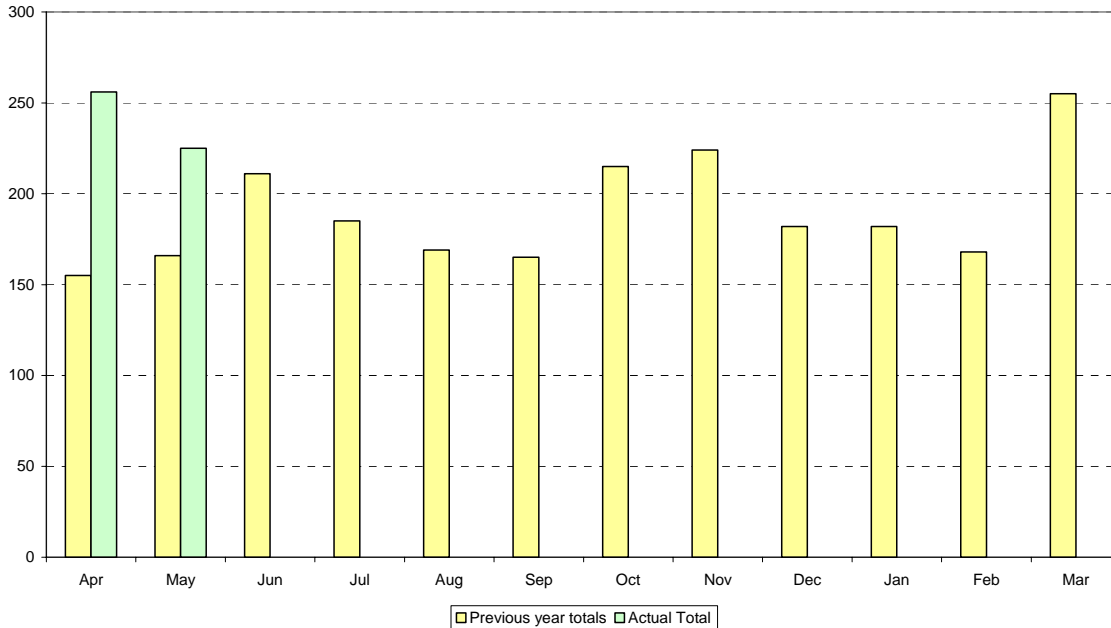


21. Robbery

Commercial robbery saw a 39% decrease from 210 crimes in 2003/4 to 129 crimes in 2004/5, but contributed to just 5% to the total robbery figure of 2,406 incidents in 2004/5.

The remaining 95% of robbery was personal robbery, which showed an increase from 2,085 to 2,277 crimes during the same period. This trend looks set to continue, with 481 crimes in the first two months of this year compared to 321 in the previous year, as shown in the chart below. However, it should be noted that April's figure was only marginally above the highest month in the previous year.

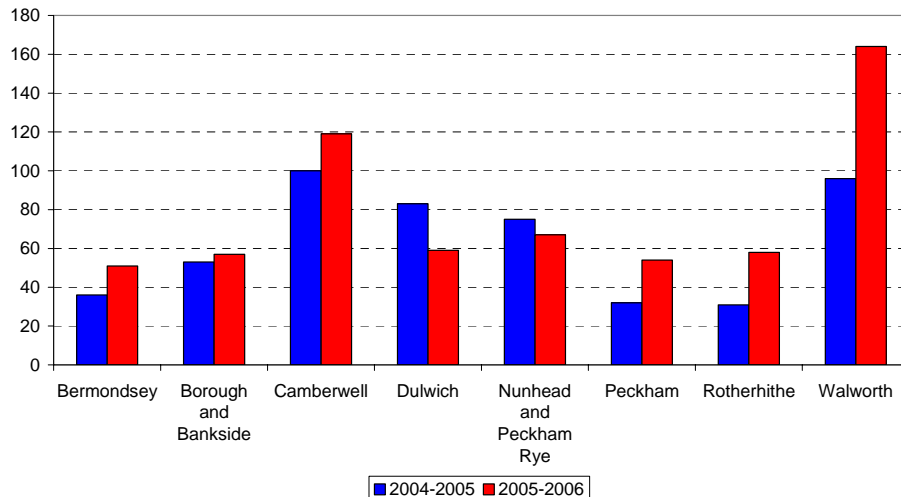
Monthly Chart : Personal robbery



22. Community Councils

The following chart illustrates the, breakdown by community council of robbery incidents reported to the police. .

Personal Robbery by Community Council



Walworth has seen a significant increase in the number of robbery incidents of 68 incidents, whereas Rotherhithe saw the largest percentage increase of 87% but had much fewer incidents. Dulwich saw the largest decrease in incidents decreasing by 29% to 59.

23. Robbery Hotspot

The following diagram illustrates the hotspot areas for robbery incidents reported to the police. The main hotspot is located at Elephant & Castle which contributes to the high number of incidents in Walworth community council.

